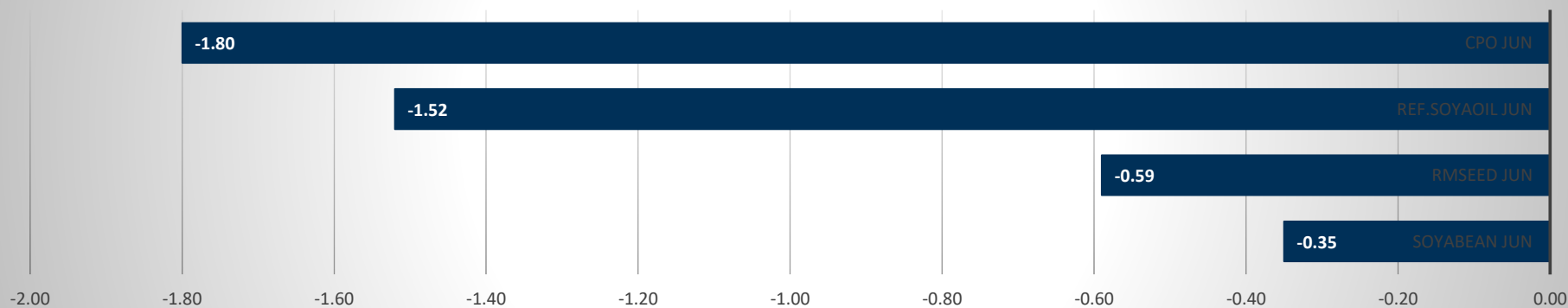


Commodity	Open	High	Low	Close	Rs.Chg	% Chg	Spot	Vol	OI	OI Chg	OI STATUS
Soyabean Jun	7119.00	7140.00	6970.00	7021.00	-25.00	-0.35	7353.00	16770	48020	-7.20	Long Liquidation
Rmseed Jun	7094.00	7111.00	6986.00	7018.00	-42.00	-0.59	7325.00	24710	50380	-5.97	Long Liquidation
Ref.Soyaoil Jun	1402.00	1406.00	1374.60	1375.70	-21.20	-1.52	1416.45	28400	30785	-4.98	Long Liquidation
Cpo Jun	1155.00	1155.00	1123.30	1126.40	-20.60	-1.80	1183.40	2056	5996	1.04	Fresh Selling

Commodity	Daily Levels								Trend	Performance			
	Close	Res - 3	Res - 2	Res - 1	Pivot	Sup - 1	Sup - 2	Sup - 3		1 Week	1 Month	3 Month	1 Year
Soyabean Jun	7021.00	7288.0	7214.0	7118.0	7044.0	6948.0	6874.0	6778.0	Negative	2.28	-2.02	27.42	45.19
Rmseed Jun	7018.00	7215.0	7163.0	7090.0	7038.0	6965.0	6913.0	6840.0	Negative	1.04	-1.38	20.06	35.86
Ref.Soyaoil Jun	1375.70	1426.0	1416.0	1395.0	1385.0	1364.0	1354.0	1333.0	Negative	-1.08	-1.80	12.76	43.14
Cpo Jun	1126.40	1178.2	1166.6	1146.5	1134.9	1114.8	1103.2	1083.1	Negative	-3.92	-4.27	5.77	44.00

## Price Movement



## DAILY SOYABEAN SYPNOSIS

Expiry	Open	High	Low	Close	Rs.Chg	% Chg	Spot	Vol	OI	OI Chg	Fut-Spot	OI STATUS
18 JUN 2021	7119.00	7140.00	6970.00	7021.00	-25.00	-0.35	7353.00	16770	48020	-7.20	-332.00	Long Liquidation
20 JUL 2021	6860.00	6886.00	6682.00	6733.00	-66.00	-0.97	7353.00	8515	18620	5.29	-620.00	Fresh Selling
20 AUG 2021	6650.00	6650.00	6471.00	6514.00	-91.00	-1.38	7353.00	1710	2335	88.31	-839.00	Fresh Selling

- Soyabean trading range for the day is 6874-7214.
- Soyabean dropped continuing its recent weak trend due to high production prospects.
- Pressure also seen tracking weakness in overseas prices because of recent rains in the US. Midwest farms are likely to have a better soybean crop.
- Russia to reduce export tax on soybeans from July 1
- At the Indore spot market in top producer MP, soybean gained 11 Rupees to 7353 Rupees per 100 kgs.

## CHART



## TECHNICALS

### Simple Moving Average

5 Days	10 Days	20 Days	50 Days	100 Days	200 Days
7077	7129	7266	6737	5769	4957
SELL	SELL	SELL	BUY	BUY	BUY

### Exponential Moving Average

5 Days	10 Days	20 Days	50 Days	100 Days	200 Days
7071	7126	7135	6715	6055	5332
SELL	SELL	SELL	BUY	BUY	BUY

### Spread

Month	Rate	JUN	JUL	AUG
JUN	7021		-288	-507
JUL	6733			-219
AUG	6514			

## DAILY RMSEED SYPNOSIS

Expiry	Open	High	Low	Close	Rs.Chg	% Chg	Spot	Vol	OI	OI Chg	Fut-Spot	OI STATUS
15 JUN 2021	7094.00	7111.00	6986.00	7018.00	-42.00	-0.59	7325.00	24710	50380	-5.97	-307.00	Long Liquidation
20 JUL 2021	7088.00	7101.00	6969.00	6999.00	-55.00	-0.78	7325.00	10410	27440	10.47	-326.00	Fresh Selling
20 AUG 2021	7080.00	7082.00	6972.00	7029.00	-25.00	-0.35	7325.00	780	8290	2.73	-296.00	Fresh Selling

- Rmseed trading range for the day is 6913-7163.
- Mustard seed prices remained under pressure tracking weakness in overseas prices after the rumors of reduction in import duty was proved.
- However the decision to ban the adulteration of mustard oil from June 8, the demand for soybean degum and palmolein has weakened.
- U.S. rapeseed production is forecast to reach a record 1.8 million tons on record area and trend yield.
- In Alwar spot market in Rajasthan the prices gained 105 Rupees to end at 7325 Rupees per 100 kg.

### CHART



### TECHNICALS

#### Simple Moving Average

5 Days	10 Days	20 Days	50 Days	100 Days	200 Days
7053	7096	7161	6629	6150	5881
SELL	SELL	SELL	BUY	BUY	BUY

#### Exponential Moving Average

5 Days	10 Days	20 Days	50 Days	100 Days	200 Days
7057	7093	7066	6727	6346	5900
SELL	SELL	SELL	BUY	BUY	BUY

#### Spread

Month	Rate	JUN	JUL	AUG
JUN	7018		-19	11
JUL	6999			30
AUG	7029			

## DAILY SOYOIL SYPNOSIS

Expiry	Open	High	Low	Close	Rs.Chg	% Chg	Spot	Vol	OI	OI Chg	Fut-Spot	OI STATUS
15 JUN 2021	1402.00	1406.00	1374.60	1375.70	-21.20	-1.52	1416.45	28400	30785	-4.98	-40.75	Long Liquidation
20 JUL 2021	1380.00	1381.00	1354.50	1356.40	-19.10	-1.39	1416.45	5895	8555	-3.50	-60.05	Long Liquidation
20 AUG 2021	1350.00	1350.00	1340.00	1342.20	-6.10	-0.45	1416.45	235	295	180.95	-74.25	Fresh Selling

- Ref.Soya oil trading range for the day is 1354-1416.
- Ref soyoil dropped as higher soybean output could limit edible oil imports.
- Indian farmers are likely to expand their soybean planting area by more than a tenth in 2021
- Edible Oil industry cautioned the government against resorting to any knee-jerk reaction of lowering import duties to cool down domestic prices
- At the Indore spot market in Madhya Pradesh, soyoil was steady at 1416.45 Rupees per 10 kgs.

### CHART



### TECHNICALS

#### Simple Moving Average

5 Days	10 Days	20 Days	50 Days	100 Days	200 Days
1397.9	1409.8	1424.3	1369.0	1263.2	1126.5
SELL	SELL	SELL	BUY	BUY	BUY

#### Exponential Moving Average

5 Days	10 Days	20 Days	50 Days	100 Days	200 Days
1394.7	1405.1	1407.5	1364.5	1284.0	1166.0
SELL	SELL	SELL	BUY	BUY	BUY

#### Spread

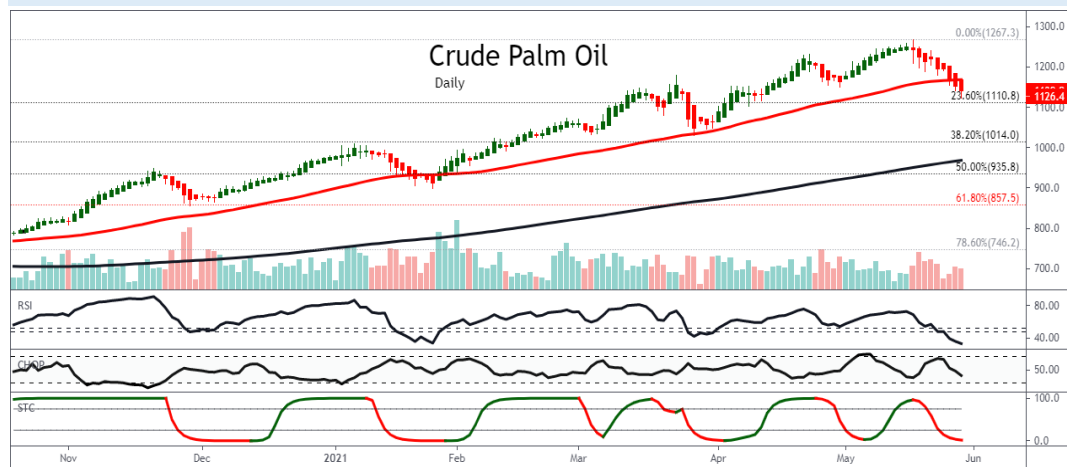
Month	Rate	JUN	JUL	AUG
JUN	1375.7		-19.3	-33.5
JUL	1356.4			-14.2
AUG	1342.2			

## DAILY CRUDE PALM OIL SYPNOSIS

Expiry	Open	High	Low	Close	Rs.Chg	% Chg	Spot	Vol	OI	OI Chg	Fut-Spot	OI STATUS
15 JUN 2021	1155.00	1155.00	1123.30	1126.40	-20.60	-1.80	1183.40	2056	5996	1.04	-57.00	Fresh Selling
30 JUL 2021	1126.40	1129.50	1096.00	1098.40	-20.50	-1.83	1183.40	300	258	82.98	-85.00	Fresh Selling
31 AUG 2021	0.00	0.00	0.00	1094.10	0.00	0.00	1183.40	0	5	0.00	-89.30	Long Liquidation

- CPO trading range for the day is 1103.2-1166.6.
- Crude palm oil dropped as market expects an increase in production and hit by demand and lockdown concerns in Malaysia.
- There are also concerns of stricter movement restrictions in Malaysia, which could implode consumption.
- Malaysia has kept its May export tax for crude palm oil at 8% but raised the reference price.
- In spot market, Crude palm oil dropped by -3.6 Rupees to end at 1183.4 Rupees.

### CHART



### TECHNICALS

#### Simple Moving Average

5 Days	10 Days	20 Days	50 Days	100 Days	200 Days
1155.2	1173.8	1183.8	1141.7	1076.5	959.2
SELL	SELL	SELL	SELL	BUY	BUY

#### Exponential Moving Average

5 Days	10 Days	20 Days	50 Days	100 Days	200 Days
1151.6	1166.1	1171.3	1142.6	1083.0	984.9
SELL	SELL	SELL	SELL	BUY	BUY

#### Spread

Month	Rate	JUN	JUL	AUG
JUN	1126.4		-28.0	-32.3
JUL	1098.4			-4.3
AUG	1094.1			

## SOYABEAN PRICE MOVEMENT SINCE 2011

Year						Sowing	Growth	Harvesting					Crop Calendar
	JAN	FEB	MAR	APR	MAY	JUN	JUL	AUG	SEP	OCT	NOV	DEC	
2011	2474.50	2408.00	2338.50	2415.50	2372.00	2294.00	2445.50	2410.50	2090.00	2178.50	2243.50	2514.00	140.00
	4.23	-2.69	-2.89	3.29	-1.80	-3.29	6.60	-1.43	-13.30	4.23	2.98	12.06	5.90
2012	2451.50	2668.50	3085.50	3625.00	3404.00	3968.50	4370.50	3947.50	3201.50	3298.00	3209.50	3203.00	689.00
	-2.49	8.85	15.63	17.49	-6.10	16.58	10.13	-9.68	-18.90	3.01	-2.68	-0.20	27.41
2013	3287.50	3324.50	3641.00	3932.00	3810.00	3670.50	2973.00	3470.00	3531.00	3925.00	3860.00	3819.00	616.00
	2.64	1.13	9.52	7.99	-3.10	-3.66	-19.00	16.72	1.76	11.16	-1.66	-1.06	19.23
2014	3926.50	4165.00	4311.50	4777.50	4592.00	4094.00	3639.00	3358.00	2963.00	3289.00	3300.00	3366.00	-453.00
	2.81	6.07	3.52	10.81	-3.88	-10.84	-11.11	-7.72	-11.76	11.00	0.33	2.00	-11.86
2015	3434.00	3406.00	3458.00	4025.00	3890.00	3329.00	3160.00	3218.00	3429.00	3909.00	3907.00	3880.00	514.00
	2.02	-0.82	1.53	16.40	-3.35	-14.42	-5.08	1.84	6.56	14.00	-0.05	-0.69	15.27
2016	3726.00	3664.00	4010.00	3927.00	3835.00	3740.00	3557.00	3257.00	3235.00	3114.00	3116.00	3029.00	-851.00
	-3.97	-1.66	9.44	-2.07	-2.34	-2.48	-4.89	-8.43	-0.68	-3.74	0.06	-2.79	-21.93
2017	3092.00	3007.00	2941.00	3002.00	2762.00	2925.00	3154.00	3097.00	3033.00	2823.00	3098.00	3118.00	89.00
	2.08	-2.75	-2.19	2.07	-7.99	5.90	7.83	-1.81	-2.07	-6.92	9.74	0.65	2.94
2018	3685.00	3802.00	3756.00	3669.00	3549.00	3566.00	3392.00	3222.00	3233.00	3269.00	3354.00	3399.00	281.00
	18.18	3.18	-1.21	-2.32	-3.27	0.48	-4.88	-5.01	0.34	1.11	2.60	1.34	9.01
2019	3826.00	3637.00	3681.00	3676.00	3718.00	3671.00	3582.00	3825.00	3939.00	3863.00	4072.00	4436.00	1037.00
	12.56	-4.94	1.21	-0.14	1.14	-1.26	-2.42	6.78	2.98	-1.93	5.41	8.94	30.51
2020	4084.00	3708.00	3796.00	3810.00	3830.00	3714.00	3780.00	4116.00	3866.00	4263.00	4415.00	4606.00	170.00
	-7.94	-9.21	2.37	0.37	0.52	-3.03	1.78	8.89	-6.07	10.27	3.57	4.33	3.83
2021	4644.00	5078.00	5993.00	7107.00									2501.00
	0.83	9.35	18.02	18.59									54.30
Average	1.48	0.61	4.39	6.05	-2.89	-1.85	-1.23	-0.14	-3.80	4.69	1.94	2.82	Average

## RMSEED PRICE MOVEMENT SINCE 2011

Year	Growth		Harvesting			Sowing							Crop Calendar
	JAN	FEB	MAR	APR	MAY	JUN	JUL	AUG	SEP	OCT	NOV	DEC	
2011	2993.00 0.70	2924.00 -2.31	2739.00 -6.33	2806.00 2.45	2944.00 4.92	2901.00 -1.46	3017.00 4.00	2997.00 -0.66	2858.00 -4.64	3104.00 8.61	3194.00 2.90	3311.00 3.66	318.00 10.62
2012	3346.00 1.06	3632.00 8.55	3925.00 8.07	4130.00 5.22	3901.00 -5.54	3990.00 2.28	4397.00 10.20	4452.00 1.25	3927.00 -11.79	4269.00 8.71	4214.00 -1.29	3544.00 -15.90	233.00 7.04
2013	3492.00 -1.47	3428.00 -1.83	3479.00 1.49	3505.00 0.75	3514.00 0.26	3451.00 -1.79	3182.00 -7.79	3571.00 12.23	3641.00 1.96	3878.00 6.51	3811.00 -1.73	3469.00 -8.97	-75.00 -2.12
2014	3353.00 -3.34	3537.00 5.49	3504.00 -0.93	3594.00 2.57	3456.00 -3.84	3595.00 4.02	3641.00 1.28	3592.00 -1.35	3693.00 2.81	3763.00 1.90	3885.00 3.24	3524.00 -9.29	55.00 1.59
2015	3378.00 -4.14	3406.00 0.83	3411.00 0.15	3869.00 13.43	4306.00 11.29	4255.00 -1.18	4232.00 -0.54	4317.00 2.01	4514.00 4.56	4923.00 9.06	4897.00 -0.53	4244.00 -13.33	720.00 20.43
2016	3877.00 -8.65	3929.00 1.34	4202.00 6.95	4472.00 6.43	4503.00 0.69	4848.00 7.66	4875.00 0.56	4681.00 -3.98	4642.00 -0.83	4498.00 -3.10	4876.00 8.40	3974.00 -18.50	604.00 14.23
2017	3834.00 -3.52	3848.00 0.37	3908.00 1.56	3759.00 -3.81	3483.00 -7.34	3609.00 3.62	3699.00 2.49	3771.00 1.95	3739.00 -0.85	3897.00 4.23	4104.00 5.31	3939.00 -4.02	-35.00 -0.88
2018	4187.00 6.30	4125.00 -1.48	4054.00 -1.72	3795.00 -6.39	3958.00 4.30	4027.00 1.74	4214.00 4.64	4070.00 -3.42	4241.00 4.20	4170.00 -1.67	3977.00 -4.63	3929.00 -1.21	-10.00 -0.25
2019	3983.00 1.37	3840.00 -3.59	3750.00 -2.34	3744.00 -0.16	3718.00 -0.69	3939.00 5.94	3950.00 0.28	3922.00 -0.71	3954.00 0.82	4306.00 8.90	4321.00 0.35	4658.00 7.80	729.00 18.55
2020	4109.00 -11.79	4000.00 -2.65	4118.00 2.95	4141.00 0.56	4490.00 8.43	4650.00 3.56	5014.00 7.83	5410.00 7.90	5468.00 1.07	6067.00 10.95	5871.00 -3.23	5817.00 -0.92	1159.00 24.88
2021	5604.00 -3.66	5536.00 -1.21	5682.00 2.64	6871.00 20.93									1054.00 18.12
Average	-2.47	0.32	1.13	3.81	1.25	2.44	2.29	1.52	-0.27	5.41	0.88	-6.07	Average

## SOYOIL PRICE MOVEMENT SINCE 2011

	JAN	FEB	MAR	APR	MAY	JUN	JUL	AUG	SEP	OCT	NOV	DEC	Growth
2011	658.60 4.12	628.40 -4.59	599.65 -4.58	626.50 4.48	660.95 5.50	634.50 -4.00	661.85 4.31	660.75 -0.17	614.10 -7.06	618.20 0.67	634.65 2.66	733.50 15.58	100.95 15.33
2012	683.15 -6.86	712.75 4.33	751.40 5.42	775.70 3.23	735.65 -5.16	761.50 3.51	784.85 3.07	792.20 0.94	663.20 -16.28	686.70 3.54	720.25 4.89	695.80 -3.39	-37.70 -5.52
2013	737.35 5.97	680.85 -7.66	688.10 1.06	719.30 4.53	715.05 -0.59	673.00 -5.88	651.95 -3.13	703.20 7.86	686.20 -2.42	748.85 9.13	713.80 -4.68	698.10 -2.20	2.30 0.31
2014	683.55 -2.08	716.65 4.84	705.45 -1.56	718.50 1.85	676.60 -5.83	693.45 2.49	676.60 -2.43	610.65 -9.75	614.00 0.55	599.85 -2.30	576.80 -3.84	638.05 10.62	-60.05 -8.79
2015	620.10 -2.81	595.40 -3.98	583.60 -1.98	582.50 -0.19	613.00 5.24	588.15 -4.05	574.70 -2.29	574.15 -0.10	598.05 4.16	611.30 2.22	619.65 1.37	614.50 -0.83	-23.55 -3.80
2016	610.10 -0.72	617.40 1.20	642.50 4.07	657.60 2.35	656.95 -0.10	644.10 -1.96	631.30 -1.99	645.95 2.32	661.45 2.40	674.30 1.94	727.65 7.91	706.95 -2.84	92.45 15.15
2017	686.10 -2.95	664.35 -3.17	623.10 -6.21	610.85 -1.97	622.80 1.96	641.90 3.07	657.35 2.41	664.05 1.02	664.70 0.10	686.10 3.22	746.45 8.80	727.50 -2.54	20.55 3.00
2018	743.85 2.25	760.85 2.29	786.85 3.42	764.75 -2.81	776.40 1.52	756.20 -2.60	742.30 -1.84	739.75 -0.34	748.30 1.16	754.85 0.88	719.95 -4.62	730.10 1.41	2.60 0.35
2019	775.80 6.26	756.85 -2.44	728.75 -3.71	740.05 1.55	755.30 2.06	745.10 -1.35	733.90 -1.50	755.05 2.88	764.50 1.25	773.65 1.20	814.40 5.27	933.20 14.59	203.10 26.18
2020	851.20 -8.79	767.60 -9.82	828.00 7.87	787.20 -4.93	785.20 -0.25	799.10 1.77	864.70 8.21	892.90 3.26	904.10 1.25	963.40 6.56	1072.30 11.30	1190.10 10.99	256.90 30.18
2021	1105.50 -7.11	1192.40 7.86	1269.50 6.47	1360.70 7.18									170.60 15.43
Average	-1.16	-1.01	0.93	1.39	0.43	-0.90	0.48	0.79	-1.49	2.70	2.90	4.14	Average



## CPO PRICE MOVEMENT SINCE 2011

	JAN	FEB	MAR	APR	MAY	JUN	JUL	AUG	SEP	OCT	NOV	DEC	Growth
2011	559.50 2.70	539.80 -3.52	510.70 -5.39	521.20 2.06	535.80 2.80	478.40 -10.71	487.40 1.88	490.20 0.57	480.80 -1.92	475.70 -1.06	508.90 6.98	545.40 7.17	0.60 0.11
2012	514.20 -5.72	536.20 4.28	592.30 10.46	621.50 4.93	585.90 -5.73	566.40 -3.33	564.40 -0.35	551.60 -2.27	446.20 -19.11	425.20 -4.71	423.20 -0.47	417.90 -1.25	-127.50 -23.38
2013	438.20 4.86	450.80 2.88	454.90 0.91	464.90 2.20	480.50 3.36	502.20 4.52	496.60 -1.12	568.70 14.52	532.40 -6.38	557.20 4.66	558.30 0.20	540.20 -3.24	122.30 29.27
2014	524.00 -3.00	590.00 12.60	569.70 -3.44	567.70 -0.35	524.90 -7.54	535.00 1.92	539.10 0.77	439.60 -18.46	474.50 7.94	457.20 -3.65	439.50 -3.87	460.60 4.80	-79.60 -14.74
2015	425.00 -7.73	466.10 9.67	434.40 -6.80	435.40 0.23	456.80 4.92	451.40 -1.18	417.60 -7.49	360.50 -13.67	425.70 18.09	400.80 -5.85	382.40 -4.59	411.00 7.48	-49.60 -10.77
2016	432.50 5.23	481.90 11.42	532.20 10.44	564.00 5.98	537.00 -4.79	506.80 -5.62	524.70 3.53	559.10 6.56	581.60 4.02	514.90 -11.47	554.70 7.73	582.70 5.05	171.70 41.78
2017	587.50 0.82	544.90 -7.25	538.80 -1.12	516.80 -4.08	512.70 -0.79	490.80 -4.27	488.70 -0.43	518.20 6.04	547.80 5.71	545.30 -0.46	589.60 8.12	554.60 -5.94	-28.10 -4.82
2018	560.60 1.08	587.50 4.80	651.80 10.94	642.60 -1.41	653.10 1.63	643.40 -1.49	616.80 -4.13	599.50 -2.80	594.00 -0.92	593.50 -0.08	500.70 -15.64	511.60 2.18	-43.00 -7.75
2019	569.40 11.30	550.10 -3.39	525.90 -4.40	529.70 0.72	519.30 -1.96	515.80 -0.67	513.60 -0.43	522.20 1.67	546.60 4.67	587.90 7.56	680.00 15.67	795.20 16.94	283.60 55.43
2020	771.80 -2.94	648.60 -15.96	663.50 2.30	609.00 -8.21	658.20 8.08	646.20 -1.82	731.80 13.25	764.90 4.52	754.90 -1.31	817.50 8.29	883.70 8.10	977.80 10.65	182.60 22.96
2021	969.30 -0.87	1059.10 9.26	1076.30 1.62	1155.70 7.38									177.90 18.19
Average	0.52	2.25	1.41	0.86	0.00	-2.27	0.55	-0.33	1.08	-0.68	2.22	4.38	Average

## KEDIA ADVISORY

KEDIA STOCKS & COMMODITIES RESEARCH PVT LTD.  
Mumbai. INDIA.

For more details, please contact:  
Mobile: +91 9323406035 / 9320096333 / 9619551022  
Email: [info@kediaadvisory.com](mailto:info@kediaadvisory.com)  
URL: [www.kediaadvisory.com](http://www.kediaadvisory.com)  
SEBI REGISTRATION NUMBER - INH000006156

General Disclaimers: This Report is prepared and distributed by Kedia Stocks & Commodities Research Pvt Ltd. for information purposes only. The recommendations, if any, made herein are expression of views and/or opinions and should not be deemed or construed to be neither advice for the purpose of purchase or sale through KSCRPL nor any solicitation or offering of any investment /trading opportunity. These information / opinions / views are not meant to serve as a professional investment guide for the readers. No action is solicited based upon the information provided herein. Recipients of this Report should rely on information/data arising out of their own investigations. Readers are advised to seek independent professional advice and arrive at an informed trading/investment decision before executing any trades or making any investments. This Report has been prepared on the basis of publicly available information, internally developed data and other sources believed by KSCRPL to be reliable. KSCRPL or its directors, employees, affiliates or representatives do not assume any responsibility for, or warrant the accuracy, completeness, adequacy and reliability of such information / opinions / views. While due care has been taken to ensure that the disclosures and opinions given are fair and reasonable, none of the directors, employees, affiliates or representatives of KSCRPL shall be liable for any direct, indirect, special, incidental, consequential, punitive or exemplary damages, including lost profits arising in any way whatsoever from the information / opinions / views contained in this Report. The possession, circulation and/or distribution of this Report may be restricted or regulated in certain jurisdictions by appropriate laws. No action has been or will be taken by KSCRPL in any jurisdiction (other than India), where any action for such purpose(s) is required. Accordingly, this Report shall not be possessed, circulated and/ or distributed in any such country or jurisdiction unless such action is in compliance with all applicable laws and regulations of such country or jurisdiction. KSCRPL requires such recipient to inform himself about and to observe any restrictions at his own expense, without any liability to KSCRPL. Any dispute arising out of this Report shall be subject to the exclusive jurisdiction of the Courts in India.